



All tarps feature an extra strength weave, and are sun & fade resistant, rot & tear proof, rust proof grommets every 3'

8' x 10' 12' x 20'

9' x 12' 20' x 20'

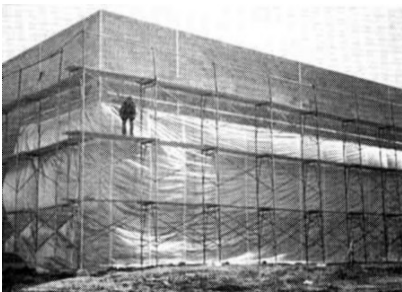
10' x 20' 20' x 40'

Tarp Straps available in 15" & 31"



Poly Sheeting

# P408	4 ML.	8' X 100' Full Gauge Poly	
# P410	4 ML.	10' x 100' Full Gauge Poly	
# P412	4 ML.	12' x 100' Full Gauge Poly	
# P416	4 ML.	16' x 100' Full Gauge Poly	
# P420	4 ML.	20' x 100' Full Gauge Poly	
# P440	4 ML.	40' x 100' Full Gauge Poly	
# P610	6 ML.	10' x 100' Full Gauge Poly	
# P612	6 ML.	12' x 100' Full Gauge Poly	
# P620	6 ML.	20' x 100' Full Gauge Poly	\$110.25



Dura-Skrim Poly

Dura-Skrim® 2 & 10HUV films are made for temporary applications that require a lightweight, tear-resistant film. **Dura-Skrim® 10HUV**, with UV stabilizers, is for similar applications that require longer life and greater durability.

#115005 20' x 100' Poly

#115007 40' x 100 Poly