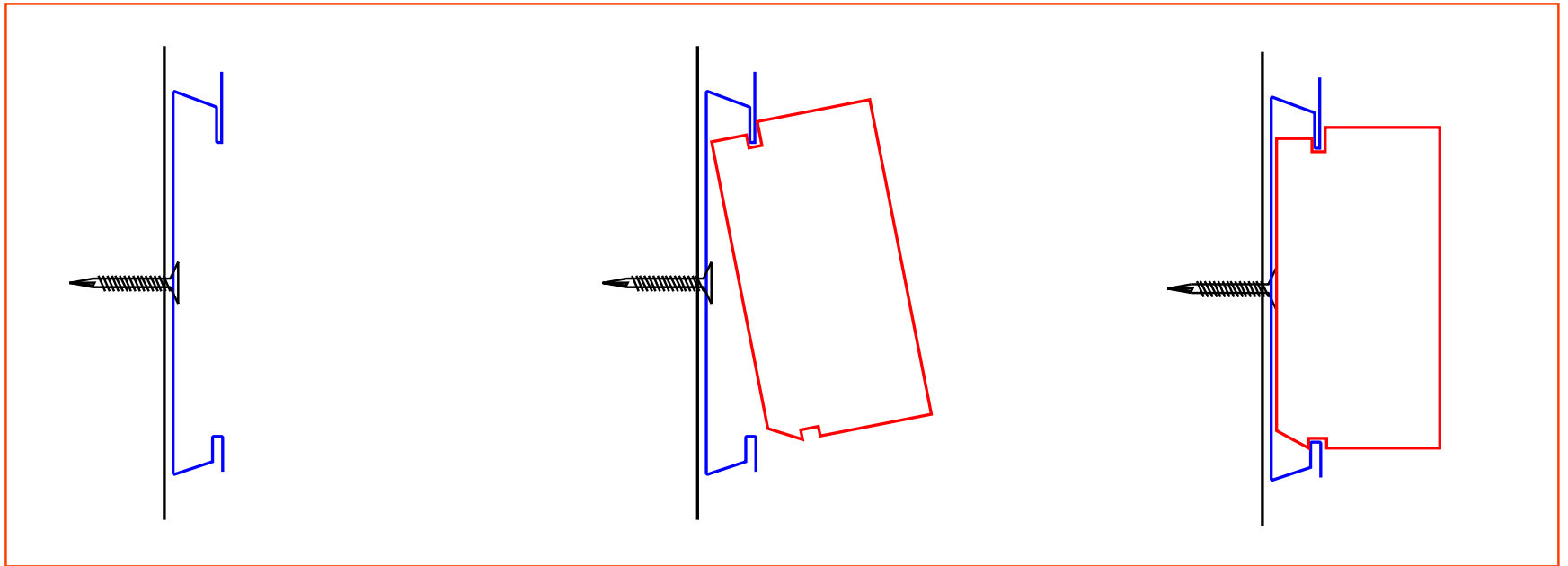


Tru-Brick[®]

Real Brick Siding

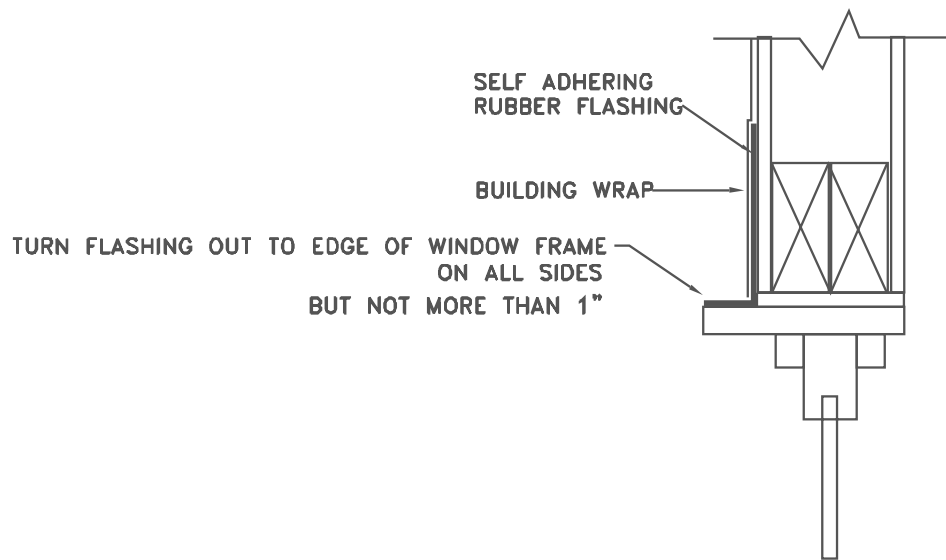


A DIVISION OF



REDLAND BRICK INC.

Standard Installation Details
Redland Siding Systems LLC

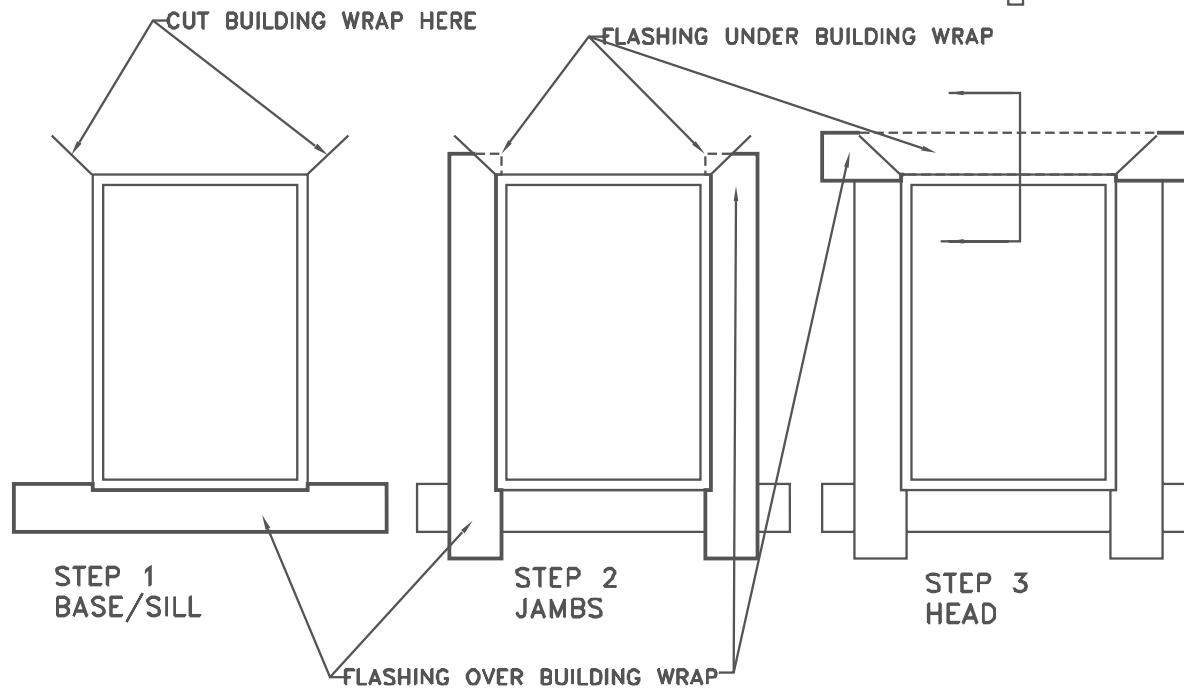


Notes:

Base and Jamb Flashings are installed on top of Building Wrap. Head Flashing is installed Under Building Wrap.

"J-Channel" is installed after Window Flashings.

See Tru-Brix Installation Instructions for more detail.



Tru-Brix®
Real Brick Siding

Redland Siding Systems LLC
POBox 160, Williamsport, MD 21795
Telephone 301-223-7700
Fax 301-223-6675

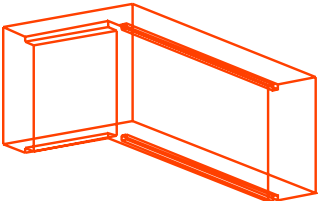
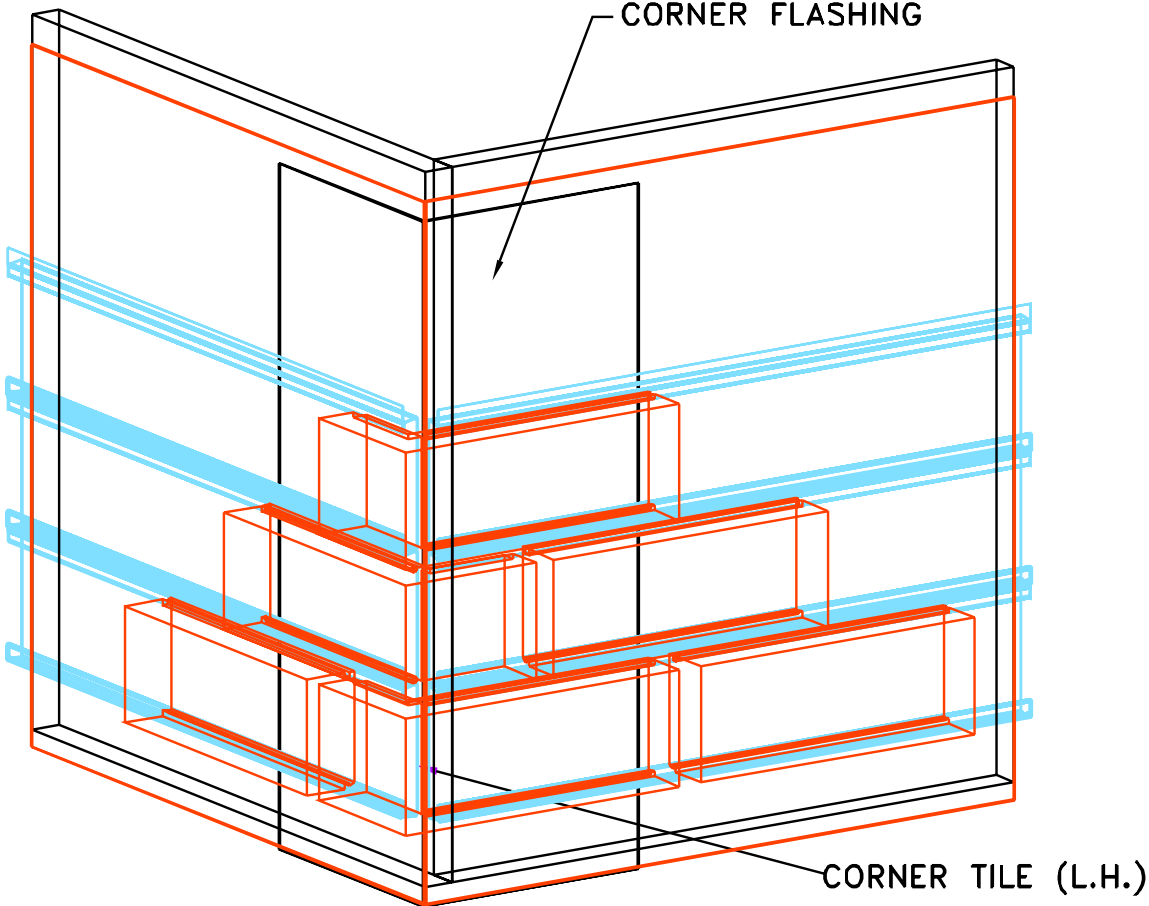
Project:
Standard Details

Drawing Title:
Flashing Openings

By: P Reynolds Date: Dec 2007

File: ARTZ II\Brick Siding\Details Formal
Revision:

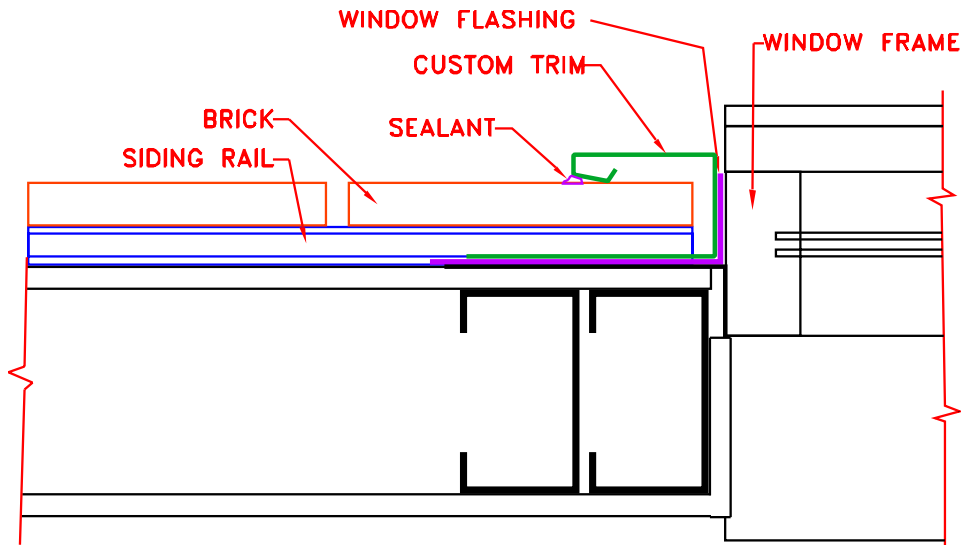
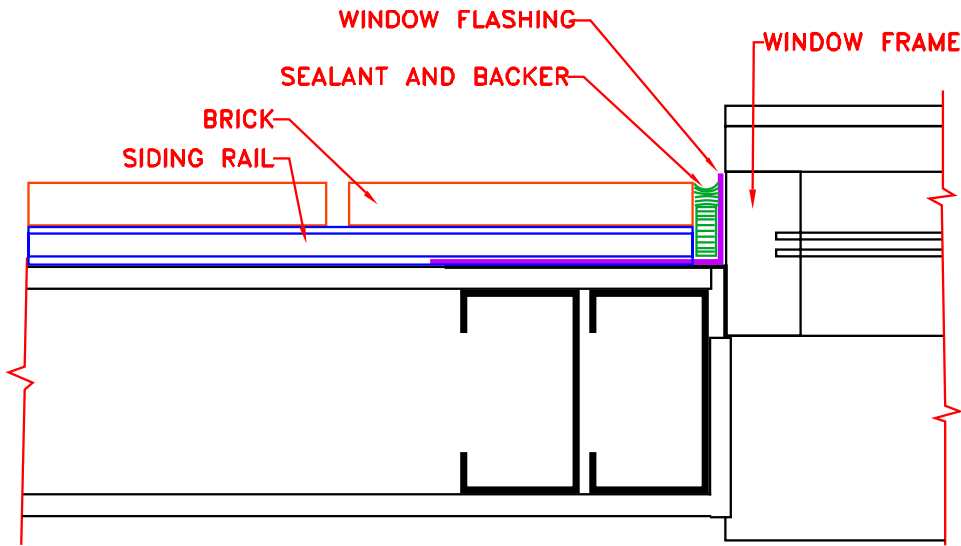
Notes;
Flashing is always installed on top
of Tru-Brix Building Wrap.



CORNER TILE (RIGHT HAND)

Tru-Brix® Real Brick Siding	
Redland Siding Systems LLC POBox 180, Williamsport, MD 21795 Telephone 301-223-7700 Fax 301-223-6675	
Project: Typical Details	
Drawing Title: Corner Flashing	
By: P Reynolds	Date: 12/07
File: ART211/Siding/E1/Details/	
Revision:	

Notes:



Tru Brix®
Real Brick Siding

Redland Siding Systems LLC
POBox 160, Williamsport, MD 21795
Telephone 301-223-7700
Fax 301-223-6675

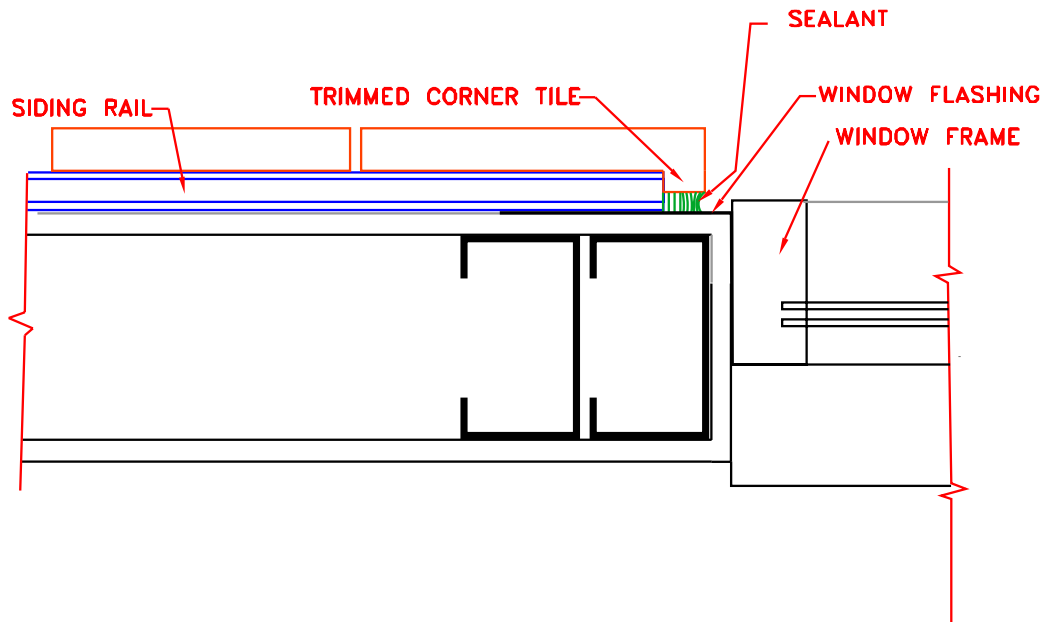
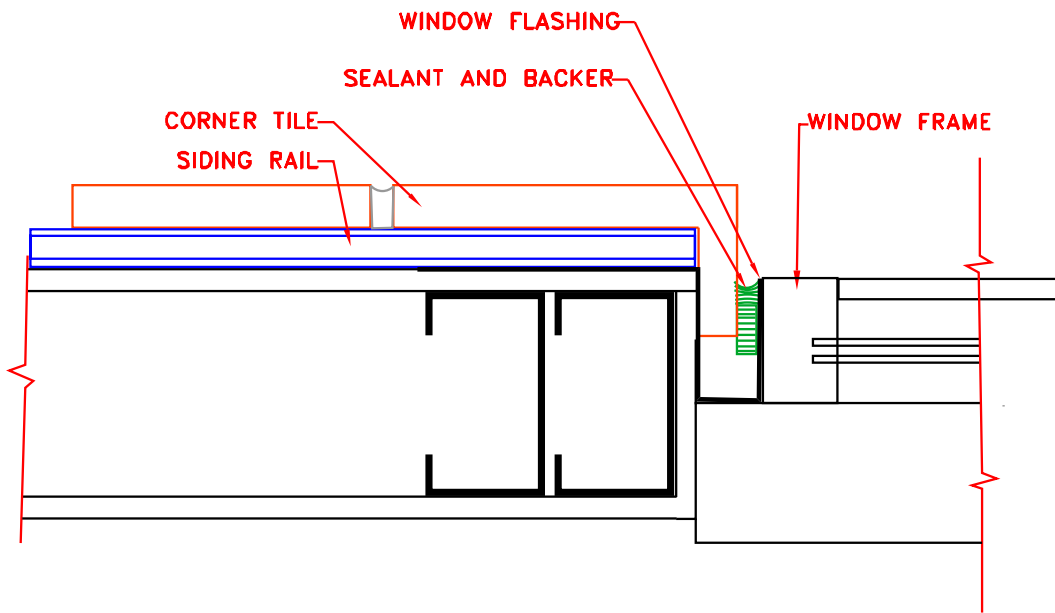
Project:
Typical Details

Drawing Title:
Jambs - Flush

By: P Reynolds Date: 12/07

File: ART211/Siding/E1/Details

Revision:



Tru-Brix®
Real Brick Siding

Redland Siding Systems LLC
POBox 160, Williamsport, MD 21795
Telephone 301-223-7700
Fax 301-223-6675

Project:
Typical Details

Drawing Title:
Jambs - Brick Recess

By: P Reynolds Date: 12/07

File: ART211/Siding/E1/Details

Revision: